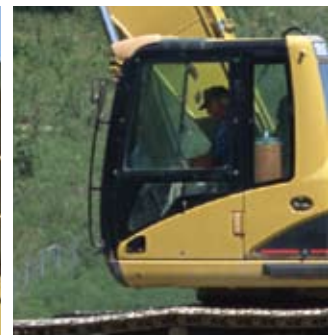
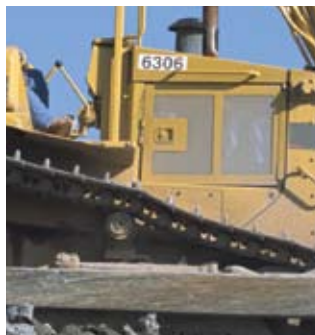


THE ULTIMATE

ANTI-THEFT AND TRACKING SYSTEM





Improve Your Bottom Line

A contractor's profitability is directly related to achieving high utilization rates on the equipment it owns. Timely information is critical to accomplishing high utilization rates. Each day, countless hours (and dollars) are lost because contractors do not have accurate information on where all their equipment is and if it is working.

XacTrac provides a fully-integrated monitoring and tracking a system that collects and transmits information about equipment operating status, location, and engine hours, all of which can easily be accessed via the Internet from any computer. XacTrac allows you to effectively manage your construction equipment and also provides a security system that provides alerts of unauthorized use. This enables you to track your equipment for theft recovery.

With fast, easy access to equipment information, owners can optimize equipment utilization, reduce security risk, and improve maintenance management. The result is less downtime, lower operating costs, and higher overall return on investment.

In many cases the reduction of insurance costs can pay for the entire (or part) of the purchase cost of the XacTrac system.

Leading Edge GPS Technology

In most cases, concealment is an issue. The XacTrac device is one of the smallest on the market and uses 3rd generation GPS technology (SiRFStar III). This technology uses reflective GPS signal rather than direct signal. Therefore, the device can be concealed within the equipment – eliminating the need for external antennas. External antennas show that there is a GPS

device onboard allowing thieves to disable a tracking device by disconnecting the antenna.

Many GPS devices employ older GPS technology, which requires line-of-site to the sky. This can be difficult, for example in dense tree-lined areas, urban sites encircled by tall buildings, and under high voltage power lines or large overpasses. Since XacTrac uses SiRFStar III technology, it is not affected by these factors, and further, it also allows the device to track inside warehouses and garages.

Reporting Capability

One of XacTrac's more impressive features is its easy-to-use reporting function, which allows greater access to equipment location and condition information than ever before.

The following pages provide an overview of XacTrac's reporting capabilities. XacTrac gives you organized, easy access to the information you need, which allows you to more effectively manage your equipment. The following reports can be downloaded to a spreadsheet and/or printed directly from the Internet.





RUNTIME REPORT

The Runtime Report shows the hours of operation of each piece of equipment by day, week, month, or any time period the user specifies. This report can be run for one piece of equipment, a group, or all of your equipment at once. This report is commonly used to bill customers/jobs, validate time cards, and provide maintenance reviews. Like all other reports in XacTrac, this report can be viewed on-line, printed from a computer, or downloaded into a spreadsheet.

XACTRAC

Demo Company 1

Runtime Report

Group(s): All Assets

27 Jul 2006 thru 31 Jul 2006

#	ID	NAME	Description	Location	Date	Hours	Report Total	Asset Total
1	601	B 111	Cat 416 C Backhoe	25010 Adams Ave, Murrieta, CA 92562	31 Jul 2006	0.7	2.0	7526.4
				25010 Adams Ave, Murrieta, CA 92562	30 Jul 2006	1.3		
2	612	B 113	Cat 420 D Backhoe	25049 Oso Viejo, Missopn Viejo, CA 92692	31 Jul 2006	1.9	8.9	295.2
				25049 Oso Viejo, Missopn Viejo, CA 92692	30 Jul 2006	2.7		
				25049 Oso Viejo, Missopn Viejo, CA 92692	29 Jul 2006	4.3		
3	606	B 116	Cat 430 D Backhoe	Yard: Rancho Cucamonga	31 Jul 2007	7.4	19.6	299.8
				1203 Marlborough Ave, Riverside, CA 92507	30 Jul 2006	3.1		
				1203 Marlborough Ave, Riverside, CA 92507	29 Jul 2006	6.3		
				1203 Marlborough Ave, Riverside, CA 92507	28 Jul 2006	2.8		
4	611	Jim's F150	P/U 1008	761 Sunset Blvd, Arcadia, Ca 91007	31 Jul 2006	7.1	12.4	2671.3
				761 Sunset Blvd, Arcadia, Ca 91007	30 Jul 2006	3.5		
				23784 Banyan st. Rancho Cucamongo, CA	29 Jul 2006	1.8		
5	608	Pete's F150	P/U 1018	1511 W 20th st, Los Angeles , CA 90007	31 Jul 2006	5.6	27.4	1275.4
				846 Mulberry Ave. Brea, CA 92821	30 Jan 2006	3.9		
				846 Mulberry Ave. Brea, CA 92821	29 Jan 2006	1.0		
				846 Mulberry Ave. Brea, CA 92821	28 Jan 2006	0.6		
				1012 E Elm St, Brea, CA 92821	27 Jan 2006	10.2		
				846 Mulberry Ave. Brea, CA 92821	26 Jan 2006	6.1		
6	614	HT505	Haul truck	41633 Knight Dr, Murrieta, CA 92562	31 Jul 2006	4.2	11.1	5691.7
				25010 Adams Ave, Murrieta, CA 92562	30 Jul 2006	6.9		
					-- Total --		81.4	17759.8

Note: **Asset Total** refers to the sum of 'runtime hours at install' (from asset page) plus all runtime hours accumulated through the date of this report.

- Lifetime Hours Per Asset
- Hours for Reporting Period
- Daily Hours
- Date of Operation
- Location of Operation
- Asset Description



LOCK DOWN

With XacTrac you can track all your equipment all the time. The Lockdown feature notifies you of any unauthorized movement of your equipment. The easy-to-use Lockdown feature allows you to quickly schedule when your equipment should be moving or running, and when it should not. If the equipment is moved or started during a lockdown period, you (and up to four other people of your choosing) will be notified by text message on your cell phone and/or by email, allowing you to take immediate action in locating your equipment from any computer or PDA with an Internet connection.

The Lockdown Violation report lets you review lockdown violation histories. The detailed history of any Lockdown violation reported can be easily viewed by simply pointing and clicking. This data can be mapped by selecting the mapping option.

XACTRAC

Demo Company 3

Lock-Down Schedule

New Lockdown schedule

Contact Info

Sun			Mon			Tue			Wed			Thu			Fri			Sat		
12	00-29	30-59	12	00-29	30-59	12	00-29	30-59	12	00-29	30-59	12	00-29	30-59	12	00-29	30-59	12	00-29	30-59
01	00-29	30-59	01	00-29	30-59	01	00-29	30-59	01	00-29	30-59	01	00-29	30-59	01	00-29	30-59	01	00-29	30-59
02	00-29	30-59	02	00-29	30-59	02	00-29	30-59	02	00-29	30-59	02	00-29	30-59	02	00-29	30-59	02	00-29	30-59
03	00-29	30-59	03	00-29	30-59	03	00-29	30-59	03	00-29	30-59	03	00-29	30-59	03	00-29	30-59	03	00-29	30-59
04	00-29	30-59	04	00-29	30-59	04	00-29	30-59	04	00-29	30-59	04	00-29	30-59	04	00-29	30-59	04	00-29	30-59
05	00-29	30-59	05	00-29	30-59	05	00-29	30-59	05	00-29	30-59	05	00-29	30-59	05	00-29	30-59	05	00-29	30-59
06	00-29	30-59	06	00-29	30-59	06	00-29	30-59	06	00-29	30-59	06	00-29	30-59	06	00-29	30-59	06	00-29	30-59
07	00-29	30-59	07	00-29	30-59	07	00-29	30-59	07	00-29	30-59	07	00-29	30-59	07	00-29	30-59	07	00-29	30-59
08	00-29	30-59	08	00-29	30-59	08	00-29	30-59	08	00-29	30-59	08	00-29	30-59	08	00-29	30-59	08	00-29	30-59
09	00-29	30-59	09	00-29	30-59	09	00-29	30-59	09	00-29	30-59	09	00-29	30-59	09	00-29	30-59	09	00-29	30-59
10	00-29	30-59	10	00-29	30-59	10	00-29	30-59	10	00-29	30-59	10	00-29	30-59	10	00-29	30-59	10	00-29	30-59
11	00-29	30-59	11	00-29	30-59	11	00-29	30-59	11	00-29	30-59	11	00-29	30-59	11	00-29	30-59	11	00-29	30-59
12	00-29	30-59	12	00-29	30-59	12	00-29	30-59	12	00-29	30-59	12	00-29	30-59	12	00-29	30-59	12	00-29	30-59
01	00-29	30-59	01	00-29	30-59	01	00-29	30-59	01	00-29	30-59	01	00-29	30-59	01	00-29	30-59	01	00-29	30-59
02	00-29	30-59	02	00-29	30-59	02	00-29	30-59	02	00-29	30-59	02	00-29	30-59	02	00-29	30-59	02	00-29	30-59
03	00-29	30-59	03	00-29	30-59	03	00-29	30-59	03	00-29	30-59	03	00-29	30-59	03	00-29	30-59	03	00-29	30-59
04	00-29	30-59	04	00-29	30-59	04	00-29	30-59	04	00-29	30-59	04	00-29	30-59	04	00-29	30-59	04	00-29	30-59
05	00-29	30-59	05	00-29	30-59	05	00-29	30-59	05	00-29	30-59	05	00-29	30-59	05	00-29	30-59	05	00-29	30-59
06	00-29	30-59	06	00-29	30-59	06	00-29	30-59	06	00-29	30-59	06	00-29	30-59	06	00-29	30-59	06	00-29	30-59
07	00-29	30-59	07	00-29	30-59	07	00-29	30-59	07	00-29	30-59	07	00-29	30-59	07	00-29	30-59	07	00-29	30-59
08	00-29	30-59	08	00-29	30-59	08	00-29	30-59	08	00-29	30-59	08	00-29	30-59	08	00-29	30-59	08	00-29	30-59
09	00-29	30-59	09	00-29	30-59	09	00-29	30-59	09	00-29	30-59	09	00-29	30-59	09	00-29	30-59	09	00-29	30-59
10	00-29	30-59	10	00-29	30-59	10	00-29	30-59	10	00-29	30-59	10	00-29	30-59	10	00-29	30-59	10	00-29	30-59
11	00-29	30-59	11	00-29	30-59	11	00-29	30-59	11	00-29	30-59	11	00-29	30-59	11	00-29	30-59	11	00-29	30-59

To define a block, click on a time period (hour + minute range). See instruction below.

Instructions: To define a block, click on a time period (hour + minute range). See instruction below. To define a block, click on a time period (hour + minute range). See instruction below. To define a block, click on a time period (hour + minute range). See instruction below.



Lockdown schedules are user-defined and easy-to-use. "Red" indicates periods when the equipment should not be started or moved, "green" indicates periods when operation is permitted.

Multiple schedules can be created and saved to accommodate all your scheduling needs. Equipment can then be assigned or unassigned to schedules for fast, easy securing of company equipment.



YARD REPORT

The XacTrac Yard Report shows what equipment is in your equipment yard or at your job sites, as well as what equipment has arrived. This report also shows what equipment is not in any yard/job and how far it is from the nearest yard/job. Equipment yards and job sites can be moved and managed from any computer with Internet access (with proper authority specified by customer).

XACTRAC
Demo Company 2

Yard Report 02 Aug 2006 thru 04 Aug 2006 Lake Forest 210

#	IDNAME	Description	Date
1	479 301007	850C DOZER W/DRB / 00 JOHN DEERE	in
2	476 322018	561D PIPELAYER W/HYD WT / 82 CAT	in
3	477 332002	572G PIPELAYER / 77 CAT	ARRIVED
4	169 392068*	Cat 420D Backhoe	in
5	468 499011	100KW GENERATOR / 01 COLEMAN	ARRIVED
6	478 552085	ASPHALT ZIPPER AZ4802 48'DR / 04	in

Lower case status indicates no movement during the report period
Map Yard Assets

Yard Report 02 Aug 2006 thru 04 Aug 2006 Huntington Beach

#	IDNAME	Description	Date
1	463 262033	Reachfork 10K lbs. / 98 CAT TH103	ARRIVED
2	466 363020	330CL EXCAVATOR / 03 CAT	ARRIVED
3	464 392060	430D Backhoe / 01 CAT	in
4	465 423001	IT38F TOOL CARRIER / 96 CAT	in
5	465 423001	185CFM AIR COMPRESSOR / 06 I-R	ARRIVED

Lower case status indicates no movement during the report period

- User-Defined Equipment Yards
- Equipment Location Status
- Description: 850C John Deere Bulldozer
- User Defined ID Name: 301007

Reading	Time	Event	GPS	Comments
Star:	31 Jan 2007 5:08a	GPS	34.0837, -,117.5766	OUT - 1.52 miles from: Rancho Cucamongo C06004
End:	01 Feb 2007 6:31a	IGN	33.4559, -,117.1101	ARRIVED Huntington Beach



ROUTE REPORT

The Route Report shows the stops and duration of stops made by any piece of equipment and is primarily used by companies involved in the delivery industry. The Route Report enables you to maximize efficiency by providing detailed information of where, when, and how your fleet is being utilized. This information allows you to minimize excessive man-hours, fuel usage, and vehicle wear and tear. This report can be run for one vehicle, a group of vehicles, or your entire fleet, it can also be run for a day, a week, a month, or any date range you specify. One simple click can then map your vehicle stops.

XACTRAC

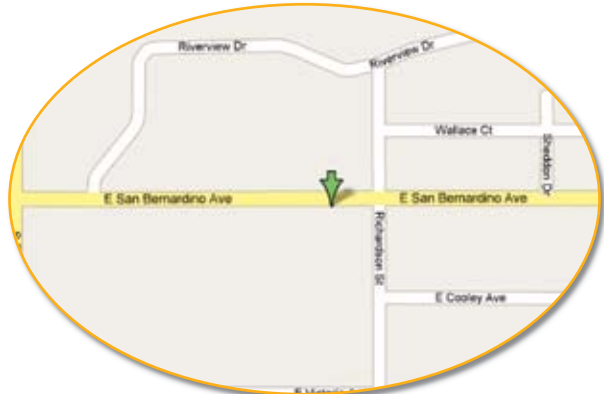
Demo Company 4

Assets Mapping Customer Help

Main > All Assets > Route Report

Route Stops

Asset	Descr	Date	Driving	Arrival	Departure	Stopped (Min)	Stop	Options
Truck #30	New asset	01/31/2007	8	2:39P	2:46P	7	1235 E Lugonia Ave; Redlands, CA 92374	Map
Truck #30	New asset	01/31/2007	18	2:15P	2:31P	16	1715 Mentone Blvd; Mentone CA92359	Map
Truck #30	New asset	01/31/2007	11	1:44P	1:57P	13	2082 Mentone Blvd; Mentone, CA 92359	Map
Truck #30	New asset	01/31/2007	6	1:22P	1:33	11	1279 Olivine Ave; Mentone, CA 92359	Map
Truck #30	New asset	01/31/2007	17	1:05P	1:16P	11	1718 E Colton Ave; Redlands, CA 92374	Map
Truck #30	New asset	01/31/2007	1	12:41P	12:48P	7	1718 E Colton Ave, Redlands, Ca 92374	Map
Truck #30	New asset	01/31/2007	5	12:28P	12:40P	12	958 N Grove St; Redlands, CA 92374	Map
Truck #30	New asset	01/31/2007	1	12:12P	12:12P	11	1948 Essex Ct; Redlands, CA 92374	Map
Truck #30	New asset	01/31/2007	2	11:46A	12:11P	25	1191 Research Dr; Redlands, CA 92374	Map
Truck #30	New asset	01/31/2007	30	11:37A	11:44A	7	2459 W Lugonia Ave; Redlands, CA 92374	Map
Truck #30	New asset	01/31/2007	5	10:52A	11:07A	15	874 Carnegie Dr; San Bernardino, CA 92408	Map
Truck #30	New asset	01/31/2007	0	10:20A	10:47A	17	1400 Cooley Ct; San Bernardino, CA 92408	Map
Truck #30	New asset	01/31/2007	1	10:14A	10:20A	6	1209 S Mountain View Ave; San Bernardino, CA 9240	Map
Truck #30	New asset	01/31/2007	6	9:59A	10:13A	14	2793 Wallace Ct; San Bernardino, CA 92408	Map
Truck #30	New asset	01/31/2007	2	9:41A	9:53A	12	817 E Colton Ave; Redlands, CA 92374	Map
Truck #30	New asset	01/31/2007	15	8:50A	9:39A	49	1948 Essex CT; Redlands, CA 92373	Map
Truck #30	New asset	01/31/2007	4	8:29A	8:35A	6	1559 Riverview Dr; San Bernardino, Ca 92408	Map
Truck #30	New asset	01/31/2007	6	8:06A	8:25A	19	2793 Wallace Ct; San Bernardino, CA 92408	Map
Truck #30	New asset	01/31/2007	26	7:59A	8:00A	1	1514 E San Bernardino Ave; San Bernardino, Ca 92408	Map
Truck #30	New asset	01/31/2007	39	6:53A	7:33A	40	1569 E San Bernardino Ave; San Bernardino, Ca 92408	Map
			203			299	Report Totals	



CUSTOMER TESTIMONIALS

"It used to be that when I watched equipment leave our yard I would worry about it not coming back. With XacTrac I don't have those concerns anymore, I know I can find it and monitor its use. Now I can focus on other things that are more productive."

Dave - Mike Bubalo Construction

"The Runtime Report saved us from a potential major cost. When a city inspector accused us of crushing an underground electrical vault with our equipment over the weekend we were able to show him our Runtime Reports and document that our equipment had not run over the weekend in question, so our equipment could not have been involved in the damage and the inspector agreed."

Eric - Jones Brothers Construction

"We tried for a long time to get a GPS system that worked with our trailers, but it was not until we found XacTrac that we were able to solve our problem. Now we can more effectively schedule our trailers and eliminate impound costs on lost trailers."

Ryan - EZE Trucking

"I was motivated to look for a good GPS system after we lost a new Kubota from our yard. With XacTrac I know where all my equipment is at any point in time. The ability to have our system notify us when maintenance is due and produce Runtime Reports is great, and the added insurance savings is icing on the cake."

Jim - Faith Underground

"I can't believe how well our XacTrac system is working. It's easy-to-use, simple to install and I can check my equipment from any Internet terminal, at home at the office or wherever. We have already recovered a stolen Freightliner within hours of its being stolen. This saves a lot of time and possible damage to the trailer."

Alex - Allstate Trucking

"With XacTrac we were able to eliminate personal use of company vehicles in just one week. Also by using the XacTrac's reports we were able to increase our utilization rates by 15%, which has increased our productivity. By seeing equipment that is not being used on one of our jobs, I can pull it off and put it on another job where it is needed. Using XacTrac's mapping function, and I have even been able to help our people find equipment in our yard without leaving my office."

Marcel - Pipeline Equipment

"XacTrac has had a great impact on our operation. It's easy to install - I don't have to become an IT specialist to install and use the system. We already have been able to recover thousands of dollars of lost or stolen equipment in just the first two months. When we ran the mapping application we noticed a piece of equipment that was in a location where we did not have any jobs. We went to that location and picked up our equipment, it was that simple."

Mark - Security Paving

"In a company our size, keeping track of our equipment was always a time-consuming process. With XacTrac this is much simpler, it's been well worth the investment."

Guy - ARB



- Fully integrated Security & Tracking, 24/7
- Point-and-click access to all company equipment
- Map assets, groups, projects & yards
- Run-Time tracking improves billing & service planning
- Lockdown feature alerts you to off-hour movement
- Daily Transit Report shows equipment movement
- Daily Yard Report shows what equipment is in or out of your yard(s)